

1. Descriptions

WP-02 is made of 0.5" aluminum. It provides mounting holes for CS mount, and other most popular laser diodes such as most of the LIMO fiber coupled laser diodes. The mounting holes for CS mount is also located on 1" grid for ease of alignment.

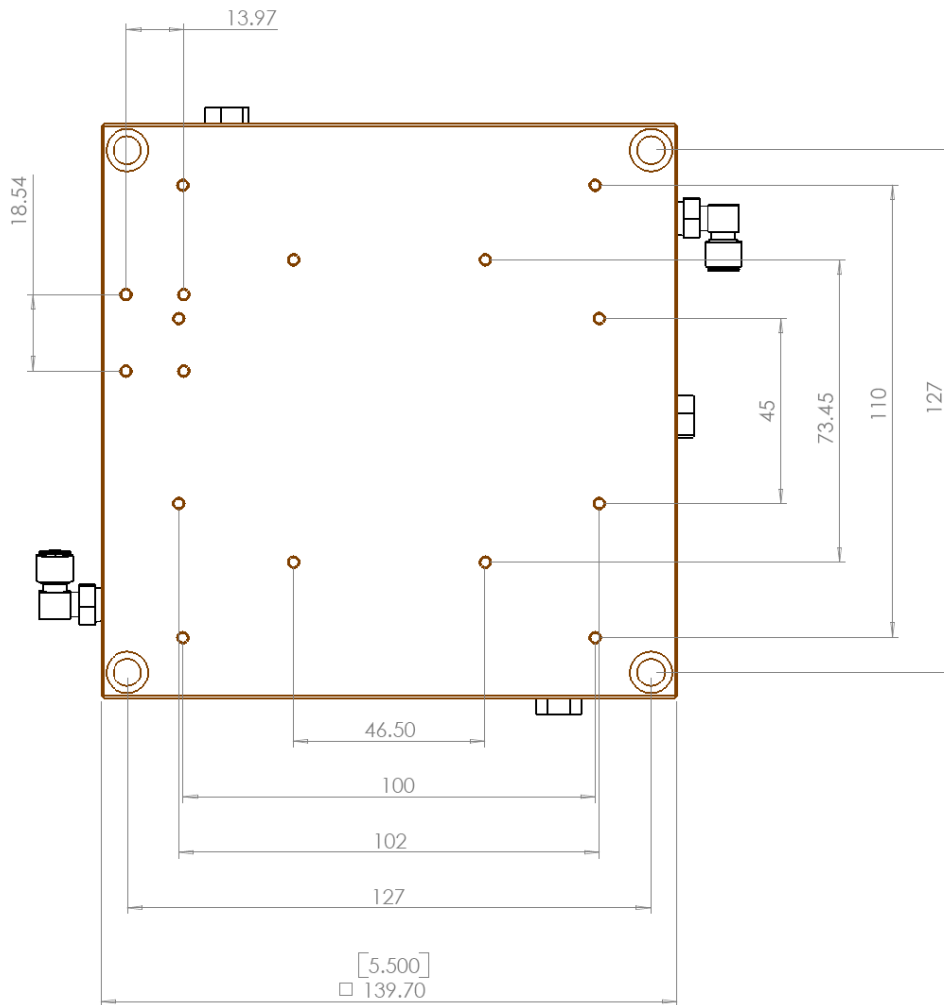
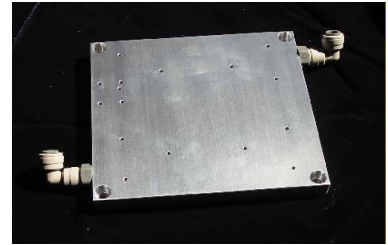
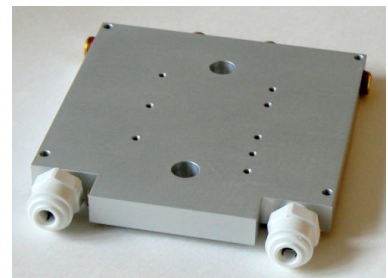


Figure 1 Outline dimensions of WP-02 (Dimensions in mm)

WP-03 is made of 0.5" thick aluminum. It is anodized, with brass plugs and acetal instant press in tube fittings. It has more machined in water passages to improve cooling effectiveness. It has mounting patterns for nLight Pearl series diodes. Users can use either side for cooling any power devices.



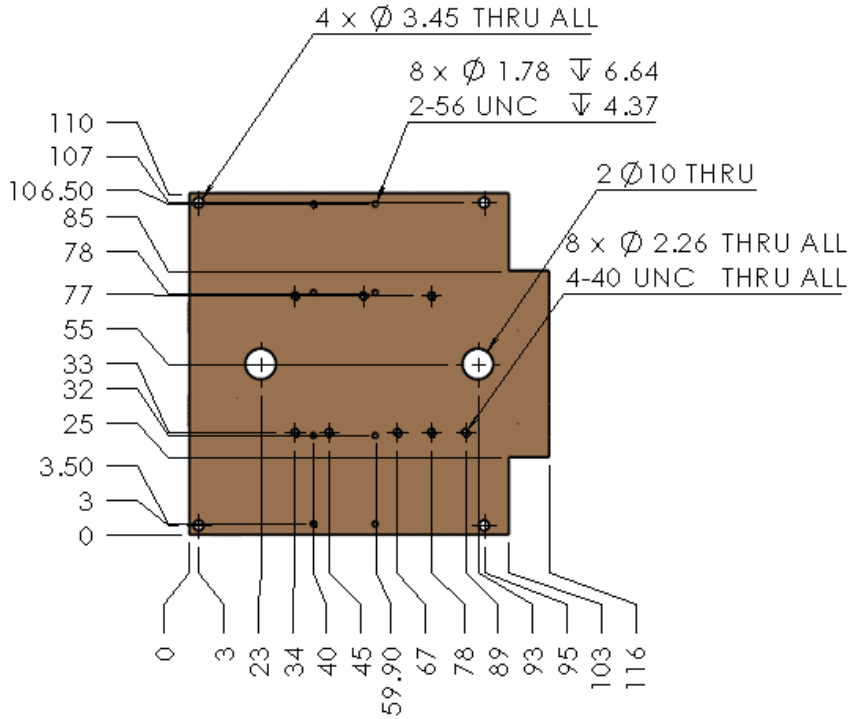


Figure 2 Outline dimensions of WP-03 (Dimensions in mm)

Figure 3 below is the performance parameters for WP-02 and WP-03.

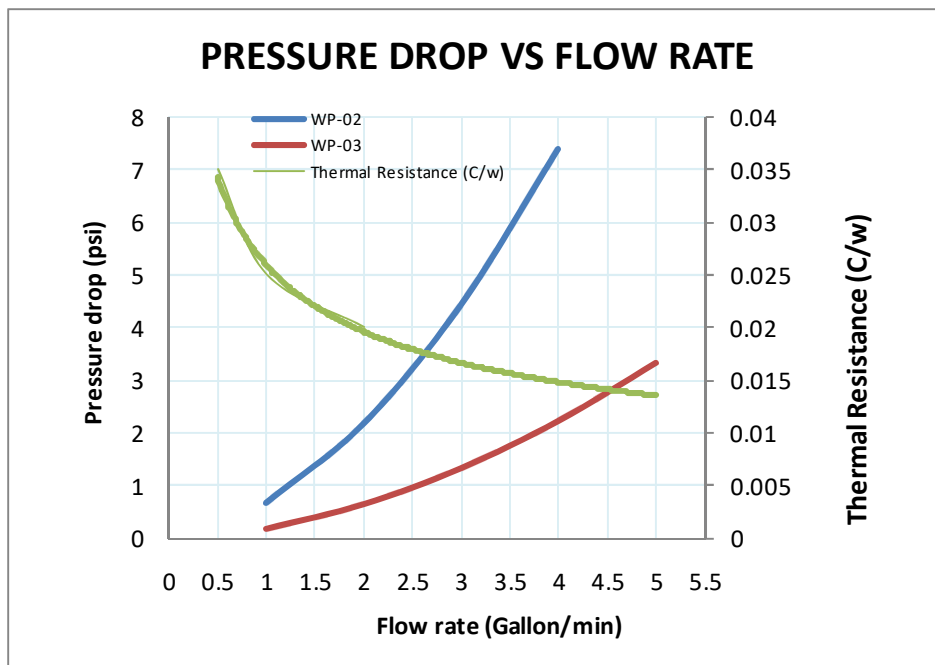
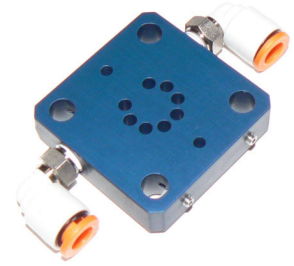
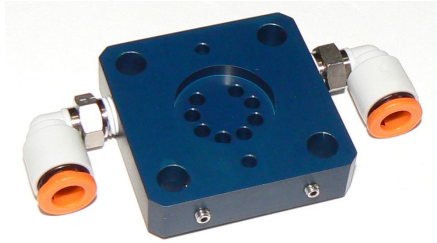


Figure 3 Pressure drop vs. flow rate

WP-04 on the right is a water cooled TO-3 mount for 30mm cage system.



2. Pricing

Please contact us for pricing and availability information:

Elite Thermal Engineering

22914 11th Ave, W, Bothell, WA 98021

Phone: 425-770-8147

Fax: 425-953-1333

Email: contact@elitethermalengineering.com